

MOISTURE ON PHOSPHATE

TASK OF MEASUREMENT

- On process with wet phosphate, customers need to mix phosphate with sulphuric acid.
- The mixing of the two products is very important for
 - the quality of the attack
 - and reduce the quantity of acid regarding the dry quantity of phosphate.

TASK OF MEASURE

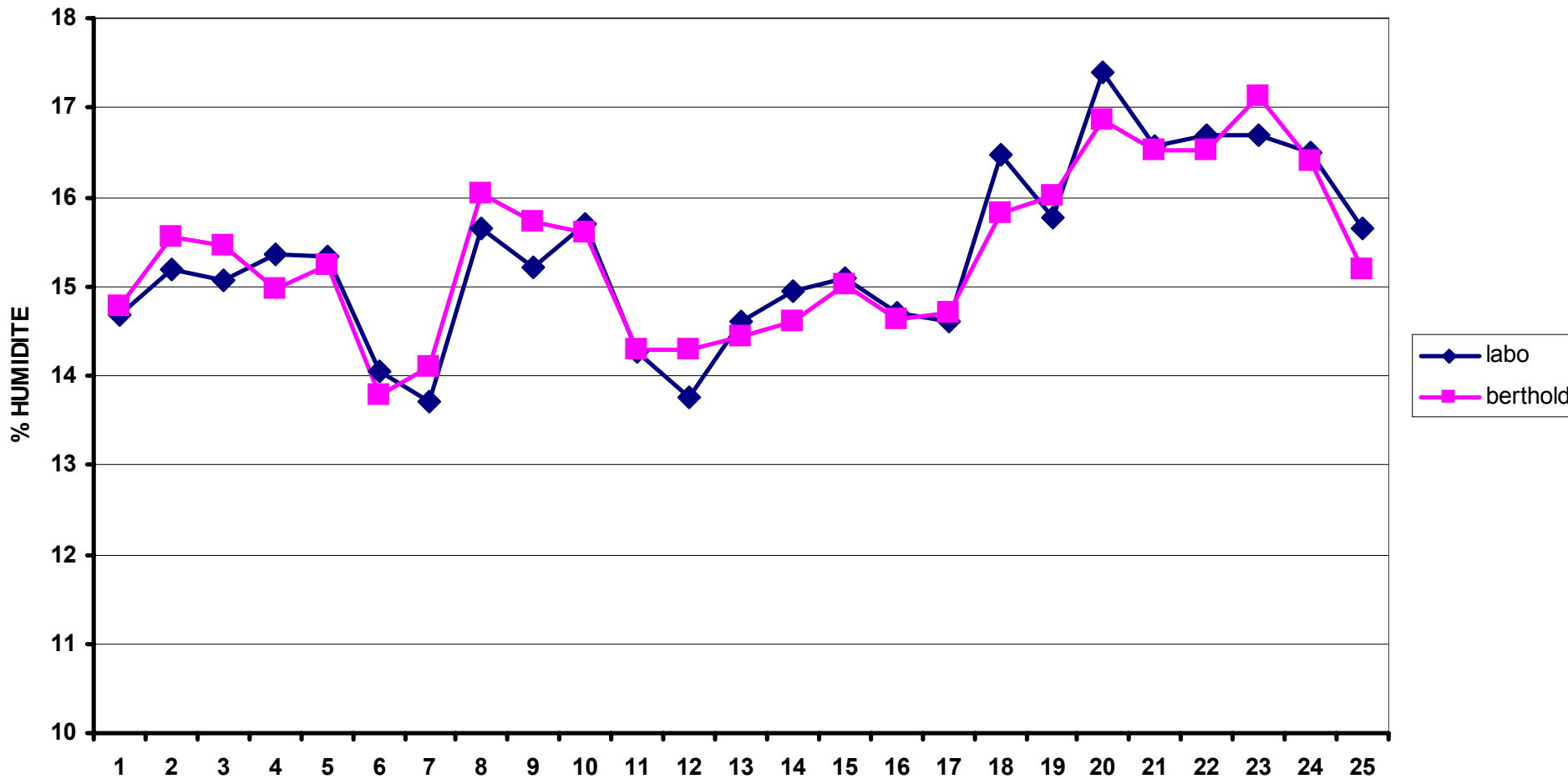
- Moisture range : 10 to 20%
- Accuracy required : 0.5 to 1% maxi
- Installation on belt weigher.
- NO GAMMA COMPENSATION

INSTALLATION

- The installation can be done on a dosing belt .
- The thickness of the product is totally constant.
 - (see the photos)

RESULTS

GRAPHIQUE EN LIGNE labo berthold



RESULTS VALUES

Coefficient de détermination R^2	0.878
Erreur-type	0.354